

Your teen's brain is developing fast.

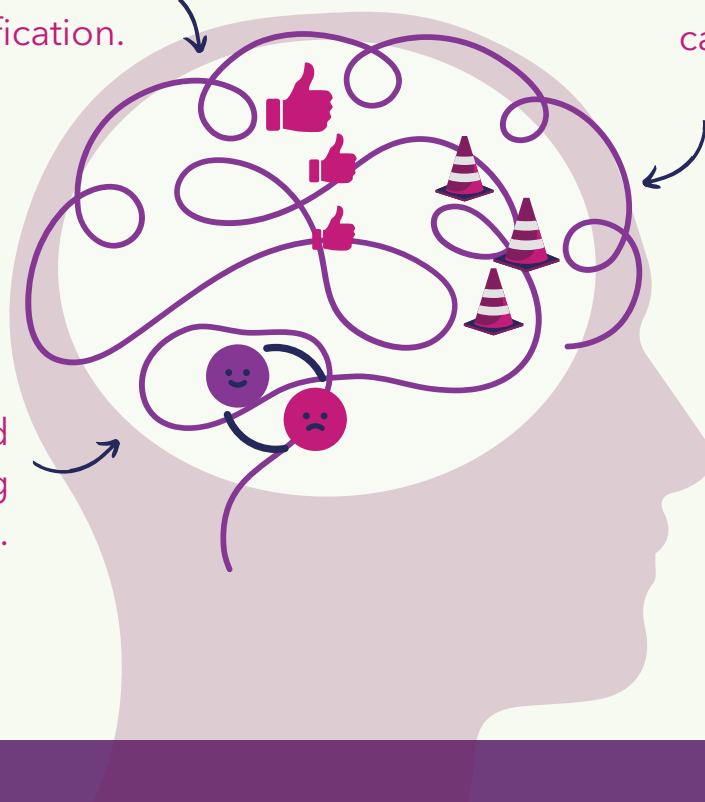
IT'S LIKE A SPONGE!

A Brain Under Construction

Drive for immediate gratification.

Developing cognitive capacities.

Intense and fluctuating emotions.



THE TEENAGE BRAIN



Since it's still under construction, the teenage brain may encounter a few challenges...

IT'S COMPLETELY NORMAL!

Every exploration, every mistake, and every experience is a learning opportunity. It helps your teen grow, get to know themselves, and make more informed decisions for the future.



Keep in mind that your teen will get the most out of their explorations, experiences, and mistakes if they have a good support system.

YOUR PRESENCE MAKES ALL THE DIFFERENCE!

